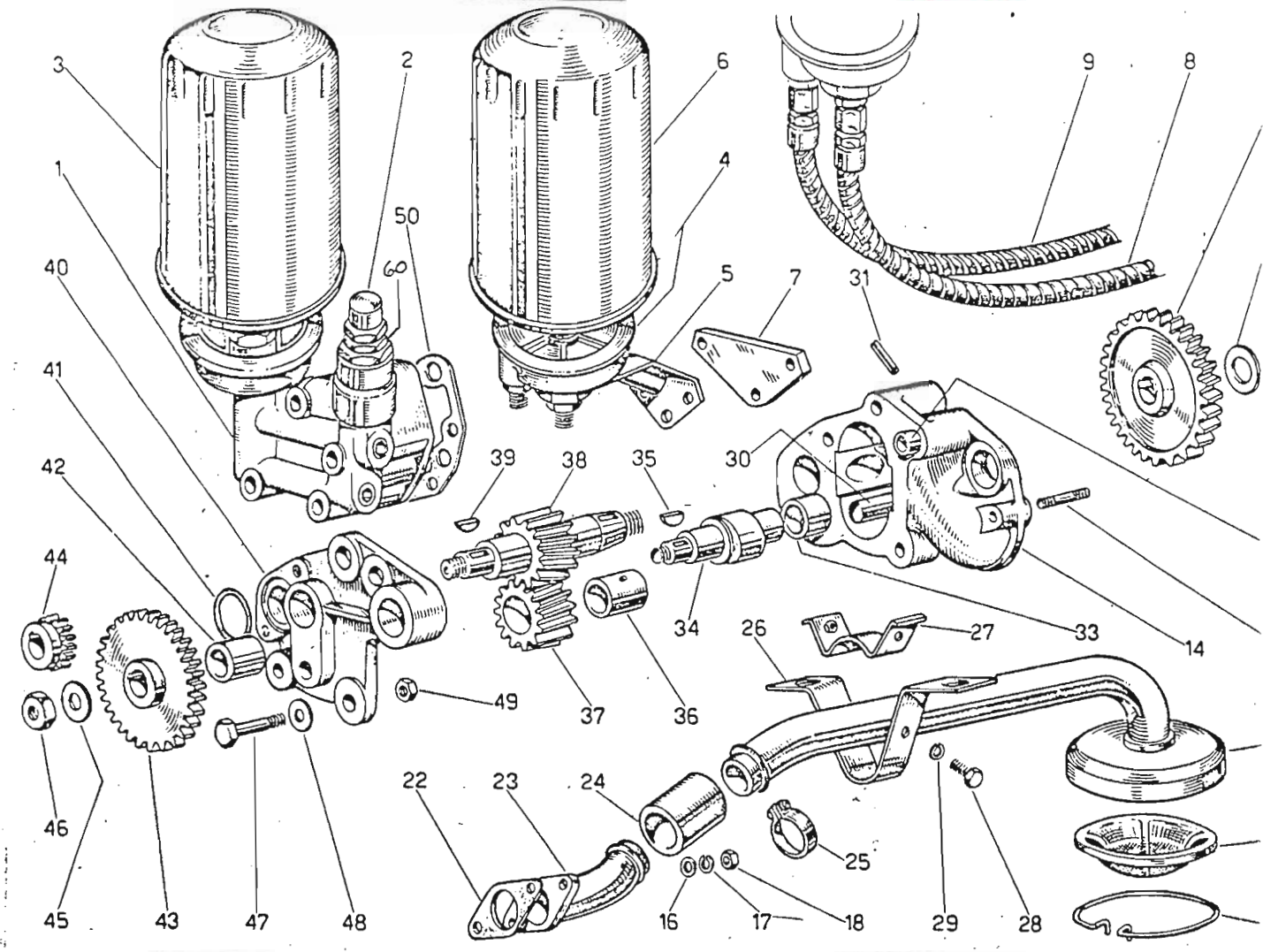


OIL SYSTEM

1.2. RIFF 69



PARTS DESCRIPTION

- |                        |                    |
|------------------------|--------------------|
| 1. Oil Pump            | 6. Fram PB-50      |
| 2. Pressure Adj. Cover | 20. Pick Up Screen |
| 3. Fram PH3 Filter     | 60. Lock Nut       |

ENGINE LUBRICATION

A gear pump is used to provide oil to the engine. The maximum oil pressure can be adjusted by means of a by-pass valve located on the oil pump. To increase the oil pressure, remove the large brass cover nut (#2) with a 15/16 or 24mm socket, slacken the thin lock nut (60) just below the cover nut. To increase the maximum oil pressure, screw the large slotted screw down (clockwise), to decrease turn counter clockwise.

RIFF-69

ENGINE LUBRICATION (continued)

This adjustment will not increase the oil pressure at low speeds, but rather limit the maximum pressure to a safe level. Pressures above the recommended limits can cause damage to the engine. Should the pressure fall below 38 to 45 PSI at high RPMs, do not continue running the engine for long periods of time. Recommended pressures are:

<u>ENGINE SPEED</u>	<u>OIL TEMPERATURE</u>	<u>OIL PRESSURE(PSI)</u>	<u>OIL PRESSURE(MET)</u>
6600 RPM	212°F/100°C	80PSI (Normal)	60 (Normal)
6600 RPM	212°F/100°C	55PSI (Minimum)	40 (Minimum)
6600 RPM	ALL	38-45PSI (Danger)	35-40 (Danger)
800 RPM	(Depends on oil)	14-21PSI (Normal)	10-15 (Normal)

NOTE: Never open the throttle full out until the oil reaches a temperature of 140°F (60°C).

Clean filter screen (20) if pressure is low. The screen should be cleaned at least every 30,000 miles. If full oil pressure is not restored, check for a damaged oil pump, clogged filter or lines, excessive bearing clearances, broken oil lines, or a defective pressure guage.

MAINTENANCE

Change oil and filters every 3,000 miles (sooner in dusty conditions). Lubricate the rubber gasket on the filter before installing, and do not over tighten.