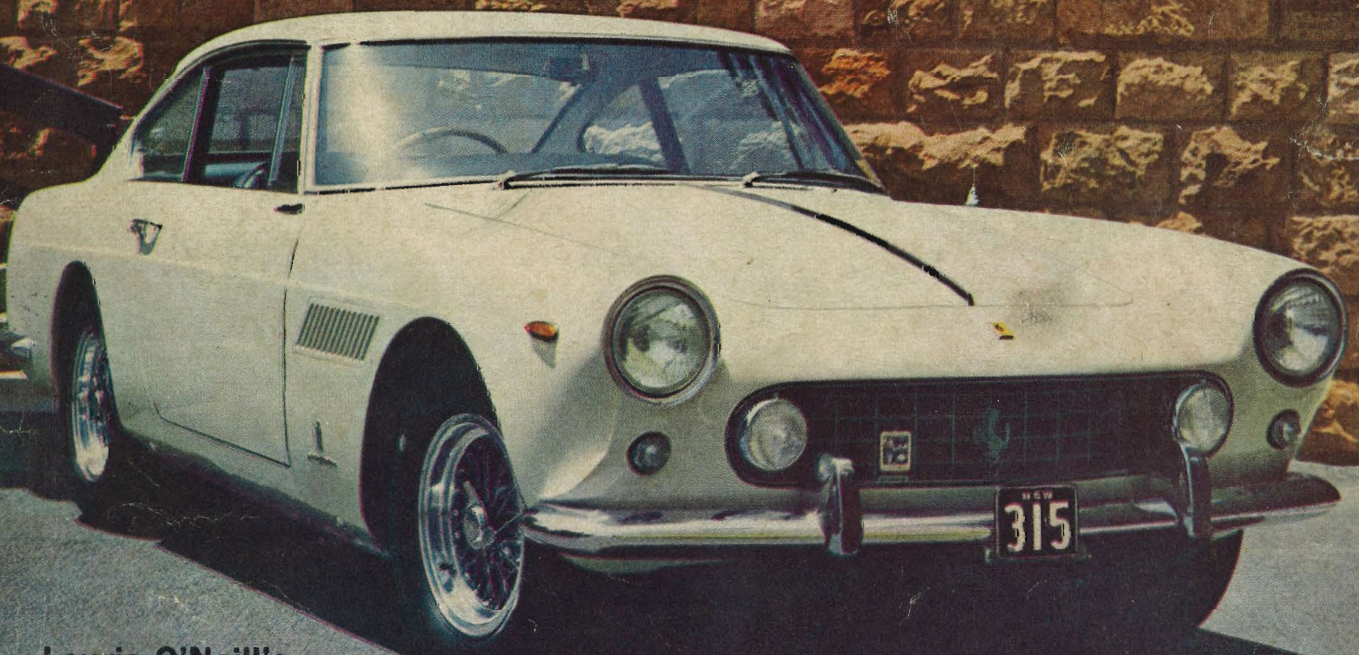


DRIVING A 130 mph SUPERCHARGED CHEVROLET 2/6

SPORTS CAR WORLD

Registered at the GPO, Sydney, for transmission by post as a periodical.

MARCH, 1964



Laurie O'Neill's
2+2 Ferrari

Chapman: FERRARI MAY BE 1964's LOTUS-EATER
TRACK TEST: 105 mph MINI • ROAD TEST: CORTINA GT